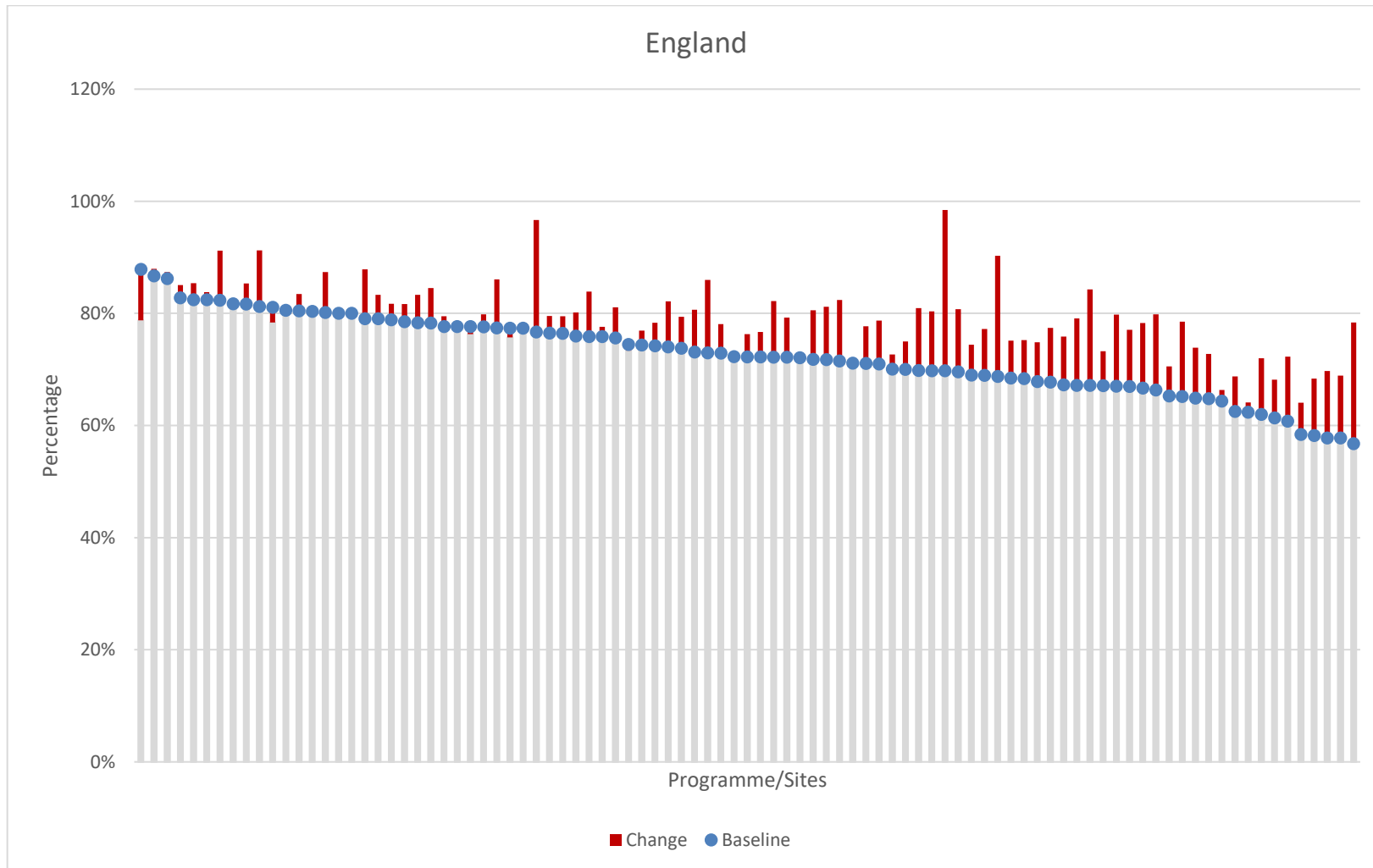


SUPPLEMENT 13

HADS Anxiety by Programme

This supplement shows the population's change in anxiety post CR, data used was from electronic entry into the NACR from 2015-2016.



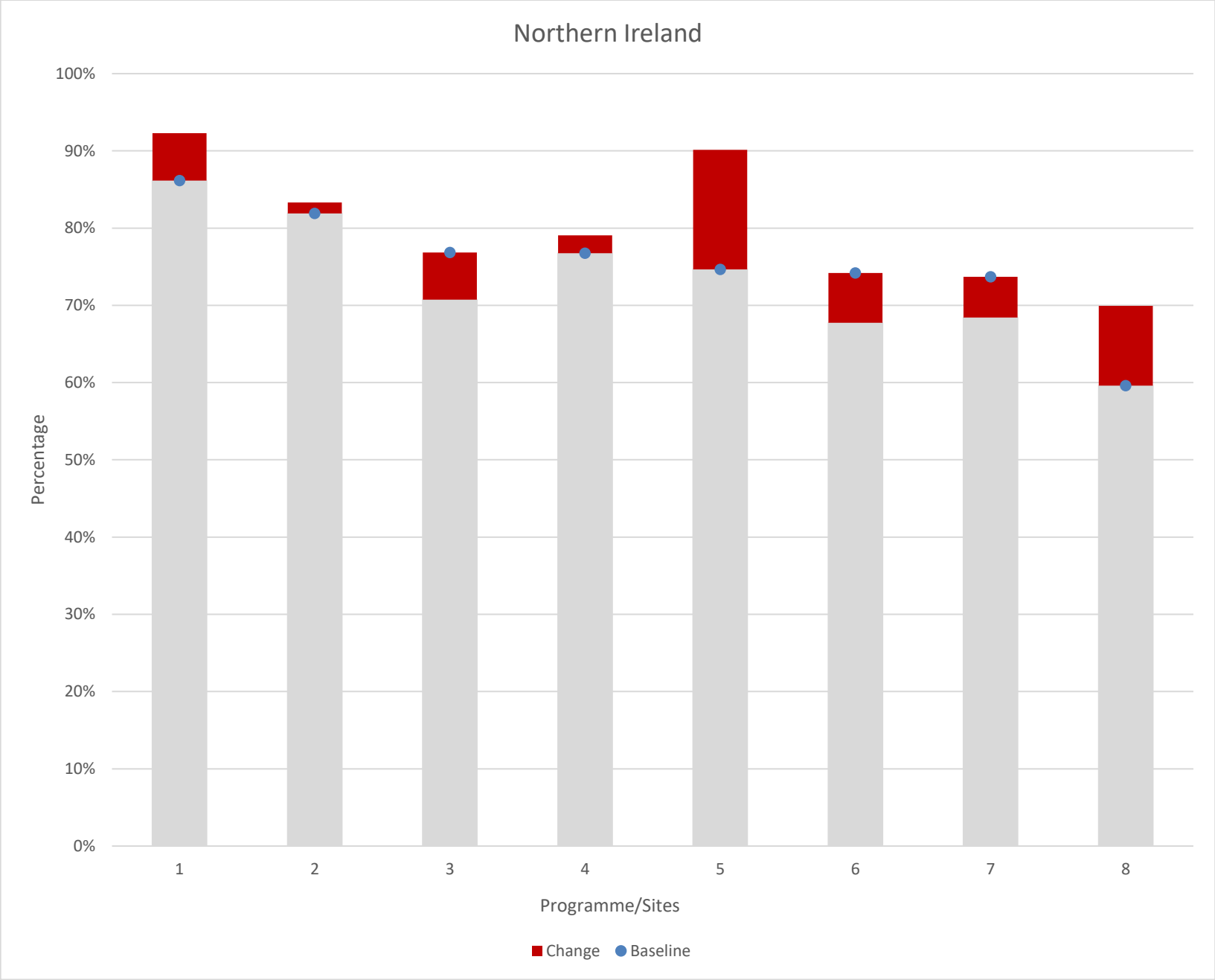
Programme/Site Name	Country	Pre			Post			Change
		Normal	Borderline	Clinically Anxious	Normal	Borderline	Clinically Anxious	Normal
Barking, Havering and Redbridge Hospitals NHS Trust (King George Hospital)	England	65%	16%	19%	71%	12%	18%	5%
Barking, Havering and Redbridge Hospitals NHS Trust (Queens Hospital)	England	65%	19%	16%	79%	14%	7%	13%
Aintree University Hospitals NHS Foundation Trust/Liverpool Community Health NHS Trust	England	58%	18%	24%	68%	22%	10%	10%
Ashford and St. Peter's Hospital NHS Trust (Ashford and St Peter's)	England	74%	16%	10%	82%	9%	9%	8%
Basildon and Thurrock University Hospitals NHS Foundation Trust (Essex Cardiothoracic Centre)	England	69%	20%	11%	77%	17%	6%	8%
Bedford Hospital NHS Trust	England	67%	17%	16%	80%	10%	11%	13%
Blackpool, Fylde and Wyre Hospitals NHS Foundation Trust	England	73%	13%	14%	78%	12%	10%	5%
Bradford Teaching Hospitals NHS Foundation Trust - Community Cardiac Rehabilitation (St Luke's Hospital/Queensbury Health Centre/Eccleshill Clinic/Bradford Royal Infirmary)	England	61%	23%	16%	68%	20%	11%	7%
Brighton and Sussex University Hospitals NHS Trust (Royal Sussex County Hospital)	England	77%	11%	11%	76%	12%	12%	-2%
Buckinghamshire Hospitals NHS Trust	England	78%	13%	10%	80%	11%	9%	2%
Burton Hospitals NHS Trust	England	77%	14%	9%	80%	14%	7%	3%
Calderdale and Huddersfield NHS Foundation Trust	England	67%	20%	13%	76%	17%	7%	9%
Central Manchester and Manchester Children's University Hospitals NHS Trust	England	58%	22%	20%	69%	20%	11%	11%
Chesterfield Royal Hospital NHS Foundation Trust	England	74%	13%	12%	78%	14%	7%	4%
City Health Care Partnership (Hull)	England	78%	11%	12%	79%	11%	10%	1%
Countess of Chester Hospital NHS Foundation Trust	England	87%	8%	5%	88%	8%	4%	1%
Croydon Health Services NHS Trust	England	76%	14%	10%	80%	16%	4%	4%
Derby Hospitals NHS Foundation Trust (Ilkeston Community Hospital and Royal Derby Hospital)	England	71%	19%	10%	71%	19%	10%	0%
Derbyshire Community Health Services NHS Foundation Trust (Chesterfield and Bolsover)	England	70%	17%	13%	81%	13%	6%	11%

Programme/Site Name	Country	Pre			Post			Change
		Normal	Borderline	Clinically Anxious	Normal	Borderline	Clinically Anxious	Normal
Doncaster and Bassetlaw Hospitals NHS Foundation Trust	England	69%	17%	14%	90%	6%	3%	22%
Dorset County Hospital NHS Foundation Trust	England	78%	13%	8%	83%	8%	8%	5%
East and North Hertfordshire NHS Trust (Lister Hospital and Queen Elizabeth II Hospital)	England	72%	14%	14%	82%	11%	7%	10%
East Cheshire NHS Trust	England	82%	5%	12%	84%	9%	7%	1%
East Lancashire Hospitals NHS Trust	England	68%	19%	13%	75%	13%	12%	7%
East Sussex Hospitals NHS Trust (Conquest Hospital)	England	70%	19%	11%	75%	17%	8%	5%
East Sussex Hospitals NHS Trust (Eastbourne District General Hospital)	England	88%	12%	0%	79%	18%	3%	-9%
Epsom and St Helier University Hospitals NHS Trust (Epsom Hospital)	England	79%	12%	9%	82%	9%	9%	3%
Epsom and St Helier University Hospitals NHS Trust (St Helier Hospital and Epsom Hospital)	England	63%	31%	6%	69%	22%	9%	6%
Frimley Park Hospital NHS Foundation Trust	England	76%	13%	11%	80%	14%	6%	3%
Great Western Hospitals NHS Foundation Trust	England	67%	24%	9%	78%	17%	5%	12%
Guy's and St Thomas' NHS Foundation Trust	England	58%	23%	19%	70%	15%	16%	12%
Hampshire Hospitals NHS Foundation Trust (Alton and Basingstoke & North Hampshire Hospital)	England	79%	15%	6%	88%	9%	3%	9%
Hampshire Hospitals NHS Foundation Trust (Royal Hampshire)	England	79%	14%	7%	83%	12%	5%	4%
Imperial Healthcare NHS Trust (Central, West London and Charing Cross and Ealing Community Cardiac Rehab)	England	65%	14%	21%	74%	14%	12%	9%
Kent Community Health NHS Trust	England	81%	5%	14%	78%	8%	14%	-3%
Kettering General Hospital NHS Trust	England	81%	11%	8%	81%	11%	8%	0%
King's College Hospital NHS Foundation Trust (Princess Royal University Hospital)	England	68%	21%	11%	75%	13%	12%	7%
Lancashire Teaching Hospitals NHS Foundation Trust (Chorley and South Ribble)	England	78%	14%	8%	84%	10%	5%	6%
Lancashire Teaching Hospitals NHS Foundation Trust (Royal Preston Hospital)	England	72%	15%	13%	81%	13%	6%	9%
Maidstone and Tunbridge Wells NHS Trust (Maidstone Hospital)	England	67%	22%	10%	79%	15%	6%	12%

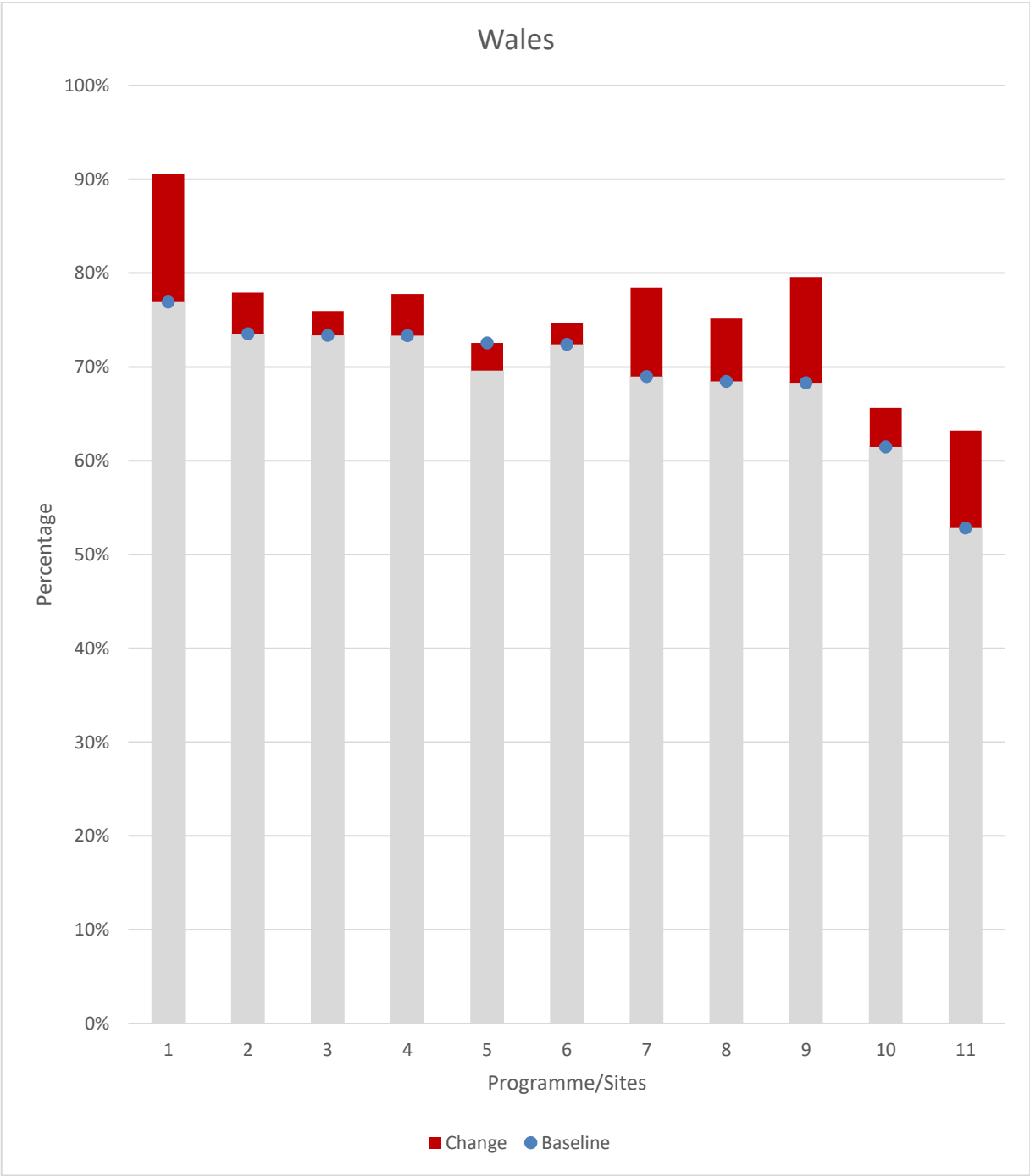
Programme/Site Name	Country	Pre			Post			Change
		Normal	Borderline	Clinically Anxious	Normal	Borderline	Clinically Anxious	Normal
Maidstone and Tunbridge Wells NHS Trust (Tunbridge Wells Hospital at Pembury)	England	70%	10%	20%	98%	1%	1%	29%
Mid Cheshire Hospitals NHS Foundation Trust	England	69%	16%	16%	74%	13%	12%	5%
Mid Essex Hospital Services NHS Trust	England	77%	15%	8%	86%	10%	4%	9%
Mid Yorkshire Hospitals NHS Trust (Dewsbury and District Hospital)	England	82%	9%	9%	91%	6%	3%	9%
North Bristol NHS Trust	England	80%	13%	7%	80%	18%	2%	0%
North Cheshire Hospitals NHS Trust	England	66%	22%	12%	80%	12%	9%	13%
North Cumbria Acute Hospitals NHS Trust (West Cumberland Hospital)	England	68%	23%	10%	77%	18%	5%	10%
North Cumbria University Hospital Trust (Cumberland Infirmary)	England	71%	19%	10%	79%	12%	9%	8%
Northern Lincolnshire and Goole Hospital NHS Foundation Trust (Scunthorpe General Hospital)	England	67%	17%	16%	77%	14%	9%	10%
Northern Lincolnshire and Goole Hospitals NHS Foundation Trust (Diana Princess of Wales Hospital)	England	61%	25%	15%	72%	15%	12%	12%
Oxford Radcliffe Hospitals NHS Trust (Horton General Hospital and John Radcliffe Hospital)	England	73%	16%	11%	86%	9%	5%	13%
Papworth Hospital NHS Foundation Trust	England	72%	15%	12%	79%	13%	8%	7%
Pennine Acute Hospitals NHS Trust (North Manchester General Hospital)	England	58%	13%	28%	64%	21%	15%	6%
Peterborough and Stamford Hospitals NHS Foundation Trust (Peterborough and City Hospital)	England	77%	9%	13%	77%	11%	11%	0%
Poole Hospital NHS Foundation Trust	England	76%	17%	7%	84%	11%	5%	8%
Portsmouth Hospitals NHS Trust	England	82%	11%	7%	82%	13%	5%	0%
Rotherham NHS Foundation Trust (Rotherham Community Health Centre)	England	86%	8%	6%	87%	8%	5%	1%
Royal Berkshire NHS Foundation Trust (Royal Berkshire Hospital and West Berkshire Community)	England	81%	15%	4%	91%	6%	3%	10%
Royal Free London NHS Foundation Trust (Chase Farm Hospital/Barnet Hospital)	England	65%	20%	15%	73%	19%	8%	8%

Programme/Site Name	Country	Pre			Post			Change
		Normal	Borderline	Clinically Anxious	Normal	Borderline	Clinically Anxious	Normal
Royal Liverpool and Broadgreen University Hospital and NHS Trust (Broadgreen Hospital and Royal Liverpool University Hospital)	England	67%	17%	16%	73%	13%	14%	6%
Royal Surrey County Hospital NHS Trust	England	82%	11%	7%	85%	9%	5%	3%
Royal United Hospital Bath NHS Trust	England	80%	12%	8%	87%	7%	5%	7%
Salisbury NHS Foundation Trust	England	76%	15%	10%	81%	13%	5%	5%
Sherwood Forest Hospitals NHS Foundation Trust (King's Mill Hospital)	England	76%	14%	10%	78%	10%	12%	2%
Solent NHS Trust	England	80%	13%	7%	83%	12%	5%	3%
Southend University Hospital NHS Foundation Trust	England	80%	11%	8%	81%	11%	7%	1%
Southport and Ormskirk Hospital NHS Trust	England	72%	20%	8%	82%	13%	5%	11%
St George's Healthcare NHS Trust (St George's Hospital/Queen Mary's Hospital)	England	78%	10%	13%	80%	10%	10%	2%
Stockport NHS Foundation Trust	England	72%	15%	13%	76%	14%	10%	4%
The Hillingdon Hospital NHS Trust	England	62%	21%	16%	64%	20%	16%	2%
The Lewisham Hospitals NHS Trust	England	70%	16%	14%	73%	21%	7%	3%
The Royal Bournemouth and Christchurch Hospitals NHS Foundation Trust	England	70%	19%	11%	80%	12%	8%	11%
The Royal Wolverhampton Hospitals NHS Trust	England	72%	11%	17%	77%	13%	10%	4%
The Whittington Hospital NHS Trust	England	64%	18%	18%	66%	17%	17%	2%
Torbay Care Trust	England	77%	23%	0%	97%	3%	0%	20%
University College London Hospitals NHS Foundation Trust	England	72%	9%	19%	72%	14%	14%	0%
University Hospital of North Staffordshire NHS Trust (County Hospital Stafford and Royal Stoke University Hospital)	England	80%	14%	6%	80%	11%	9%	0%
University Hospital Of South Manchester NHS Foundation Trust	England	74%	16%	10%	79%	13%	8%	6%
University Hospitals Coventry and Warwickshire NHS Trust (Hospital of St Cross)	England	82%	9%	9%	85%	12%	3%	4%
University Hospitals Coventry and Warwickshire NHS Trust (University Hospital, Coventry)	England	62%	20%	18%	72%	18%	10%	10%

Programme/Site Name	Country	Pre			Post			Change
		Normal	Borderline	Clinically Anxious	Normal	Borderline	Clinically Anxious	Normal
University Hospitals Of Leicester NHS Trust (Glenfield Hospital, Leicester General Hospital and Leicester Royal Infirmary)	England	68%	14%	17%	75%	14%	11%	7%
Warrington and Halton Hospitals NHS Foundation Trust	England	78%	14%	8%	76%	13%	11%	-1%
West Hertfordshire Hospitals NHS Trust (Hemel Hempstead)	England	67%	20%	13%	84%	13%	3%	17%
West Hertfordshire Hospitals NHS Trust (St Albans City Hospital)	England	72%	13%	15%	81%	9%	9%	9%
West Hertfordshire Hospitals NHS Trust (Watford)	England	73%	18%	9%	81%	14%	5%	8%
West Suffolk Hospitals NHS Trust	England	79%	14%	7%	82%	10%	9%	3%
Western Sussex Hospitals NHS Foundation Trust (St Richards)	England	72%	20%	8%	72%	15%	12%	0%
Wirral Community NHS Foundation Trust (Wirral Heart Support Centre)	England	71%	17%	11%	78%	13%	10%	7%
Worthing and Southlands Hospitals NHS Trust	England	70%	20%	11%	81%	11%	9%	11%
York Teaching Hospital NHS Foundation Trust (Scarborough/Whitby/Ryedale/Whitby Community Hospital)	England	57%	24%	19%	78%	14%	8%	22%
York Teaching Hospital NHS Foundation Trust (York Hospital)	England	74%	13%	13%	77%	15%	8%	3%
Your Healthcare CIC (Surbiton Hospital)	England	74%	16%	10%	73%	20%	7%	-1%



Programme/Site Name	Country	Pre			Post			Change
		Normal	Borderline	Clinically Anxious	Normal	Borderline	Clinically Anxious	Normal
Belfast Health and Social Care Trust (Belfast City Hospital)	Northern Ireland	60%	20%	20%	70%	16%	14%	10%
Northern Health and Social Care Trust (Antrim Area Hospital)	Northern Ireland	77%	10%	13%	79%	15%	6%	2%
Northern Health and Social Care Trust (Causeway Hospital)	Northern Ireland	75%	14%	11%	90%	6%	4%	15%
Northern Health and Social Care Trust (Mid-Ulster Hospital)	Northern Ireland	86%	9%	5%	92%	6%	2%	6%
Northern Health and Social Care Trust (Whiteabbey Hospital)	Northern Ireland	74%	12%	14%	68%	18%	14%	-5%
South Eastern Health and Social Care Trust (Downe Hospital)	Northern Ireland	74%	13%	13%	68%	19%	13%	-6%
South Eastern Health and Social Care Trust (Ulster Hospital)	Northern Ireland	82%	8%	10%	83%	11%	6%	1%
Southern Health and Social Care Trust (South Tyrone Hospital)	Northern Ireland	77%	11%	12%	71%	20%	10%	-6%



Programme/Site Name	Country	Pre			Post			Change
		Normal	Borderline	Clinically Anxious	Normal	Borderline	Clinically Anxious	Normal
Abertawe Bro Morgannwg University Health Board (Morrison Hospital, Singleton Hospital)	Wales	73%	17%	10%	76%	17%	7%	3%
Abertawe Bro Morgannwg University Health Board (Neath/Port Talbot Hospital)	Wales	53%	25%	23%	63%	18%	19%	10%
Abertawe Bro Morgannwg University Health Board (Princess of Wales Hospital)	Wales	77%	11%	12%	91%	7%	3%	14%
Aneurin Bevan University Health Board (County Hospital)	Wales	73%	17%	10%	78%	12%	10%	4%
Aneurin Bevan University Health Board (Nevill Hall Hospital)	Wales	68%	13%	18%	75%	13%	12%	7%
Aneurin Bevan University Health Board (St Woolos Hospital)	Wales	68%	18%	13%	80%	14%	6%	11%
Aneurin Bevan University Health Board (Ysbyty Ystrad Fawr)	Wales	61%	13%	26%	66%	16%	19%	4%
Betsi Cadwaladr University Health Board (Wrexham Maelor Hospital, East Cardiac Rehabilitation Service)	Wales	74%	16%	10%	78%	16%	6%	4%
Cardiff and Vale University Health Board (University Hospital of Wales, Llandough Hospital)	Wales	69%	16%	16%	78%	15%	7%	9%
Hywel Dda University Health Board (Bronglais Hospital)	Wales	73%	17%	11%	70%	19%	12%	-3%
Hywel Dda University Health Board (Glangwili Hospital, Prince Philip Hospital)	Wales	72%	16%	11%	75%	17%	8%	2%

Programme/Site Name	Country	Pre			Post			Change
		Normal	Borderline	Clinically Anxious	Normal	Borderline	Clinically Anxious	Normal
Isle of Man (Nobles Hospital)	Other	83%	10%	7%	85%	9%	6%	2%